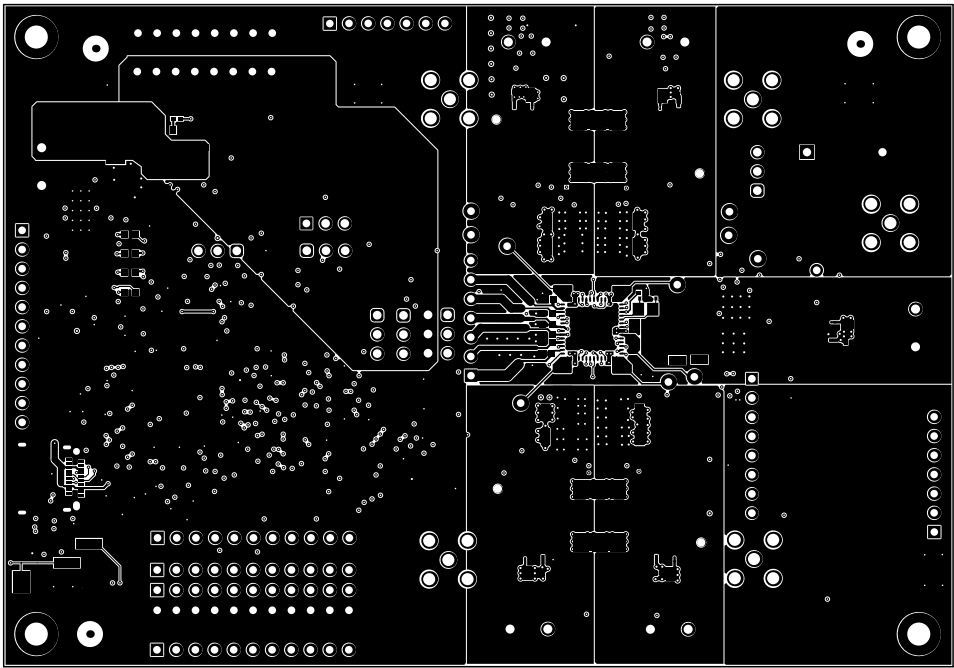
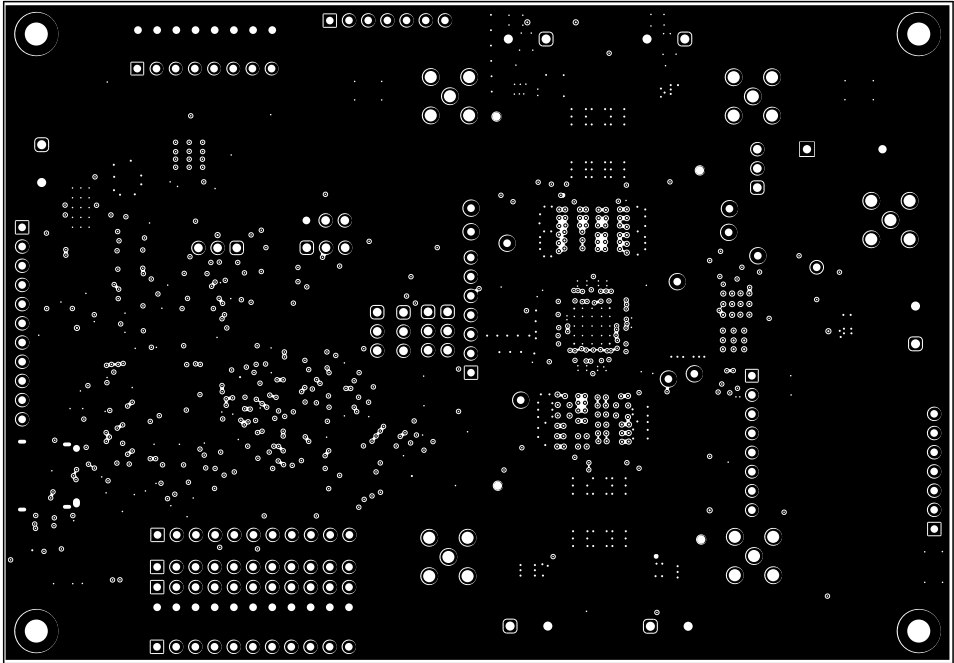


ALL ARTWORK VIEWED FROM TOP SIDE	BOARD #: BMC047	REV: A	SUN REV: Not In VersionControl
LAYER NAME = Top Solder			
PLOT NAME = Top Solder Mask	GENERATED : 3/13/2021 11:20:01 AM	TEXAS INSTRUMENTS	

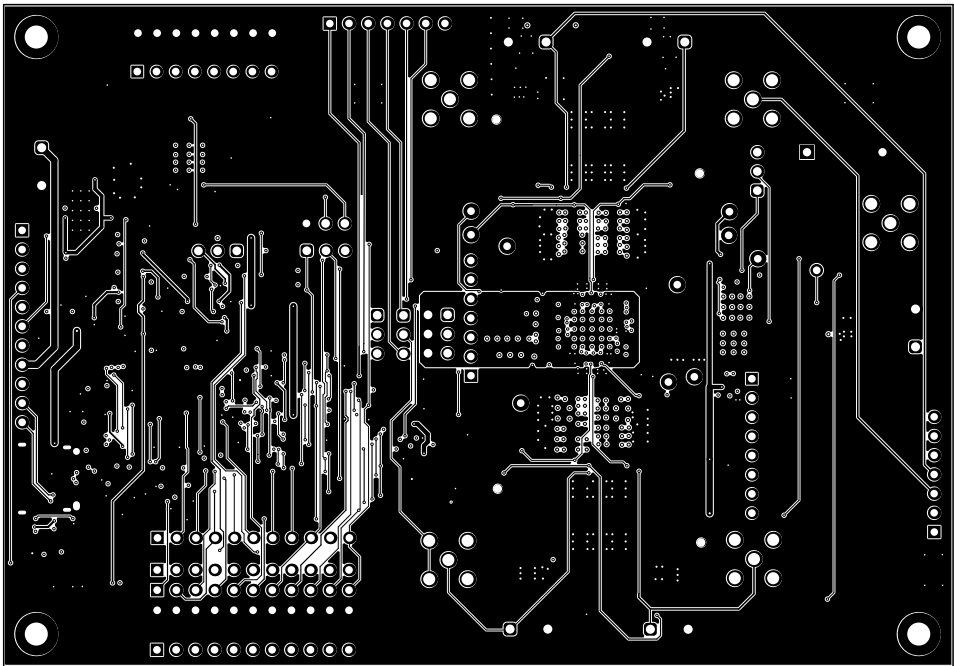


ALL ARTWORK VIEWED FROM TOP SIDE	BOARD #: BMC047	REV: A	SUN REV: Not In VersionControl
LAYER NAME = Top Layer			
PLOT NAME = Top Layer	GENERATED : 3/13/2021 11:20:03 AM	TEXAS INSTRUMENTS	

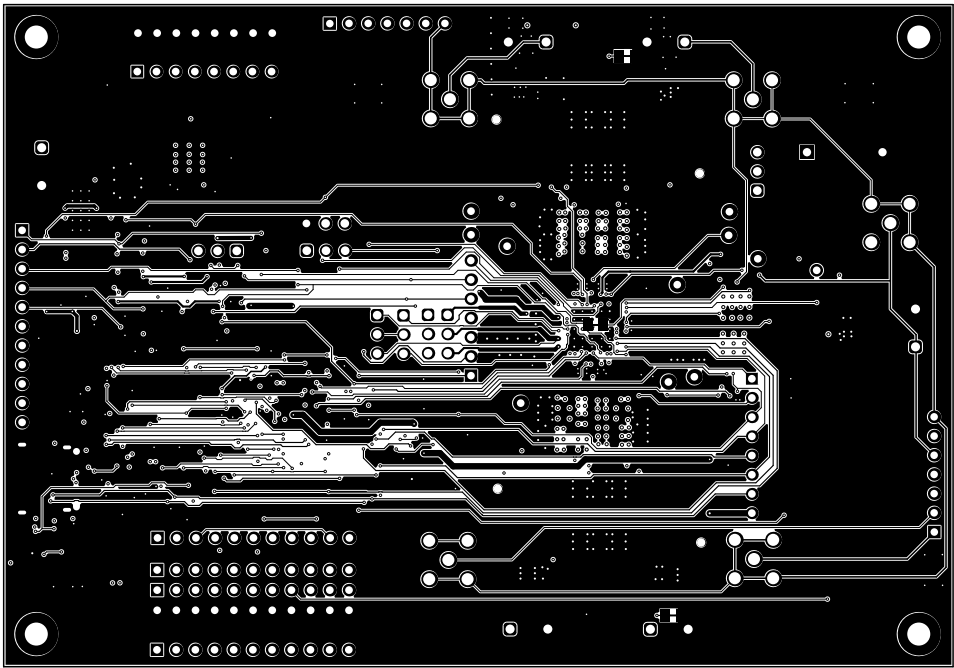


ALL ARTWORK VIEWED FROM TOP SIDE	BOARD #: BMC047	REV: A	SUN REV: Not In VersionControl
LAYER NAME = GND Layer 1			
PLOT NAME = Signal Layer 1	GENERATED : 3/13/2021 11:20:06 AM	TEXAS INSTRUMENTS	

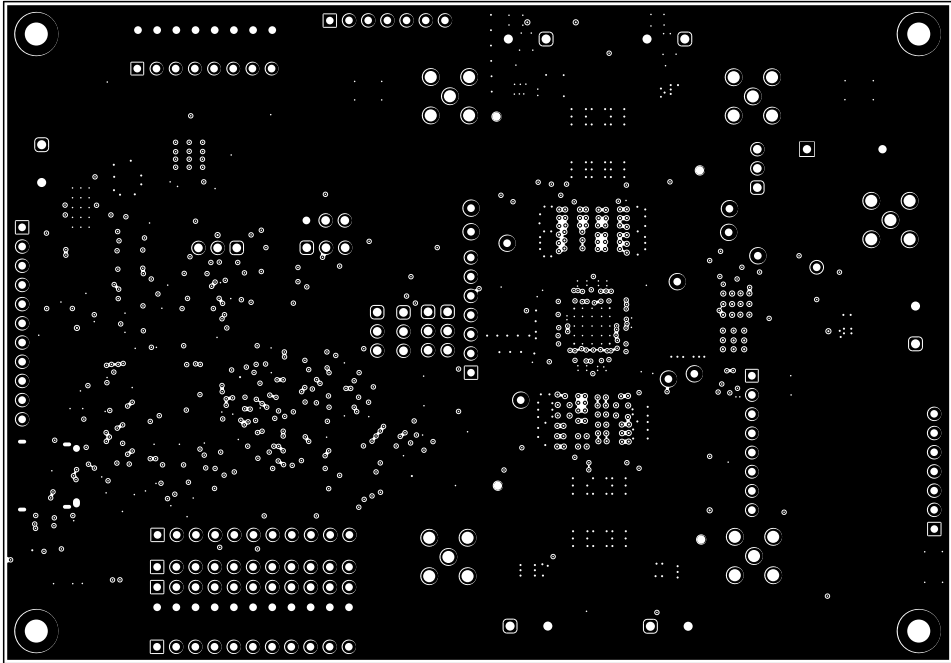




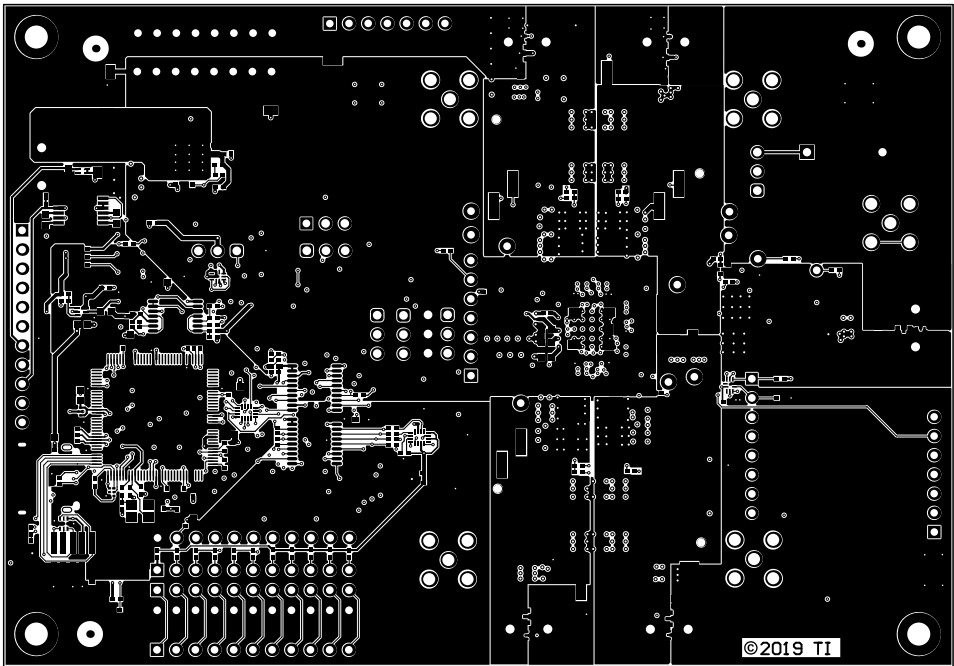
ALL ARTWORK VIEWED FROM TOP SIDE	BOARD #: BMC047	REV: A	SUN REV: Not In VersionControl
LAYER NAME = Signal Layer 1			
PLOT NAME = Signal Layer 2	GENERATED : 3/13/2021 11:20:08 AM	TEXAS INSTRUMENTS	



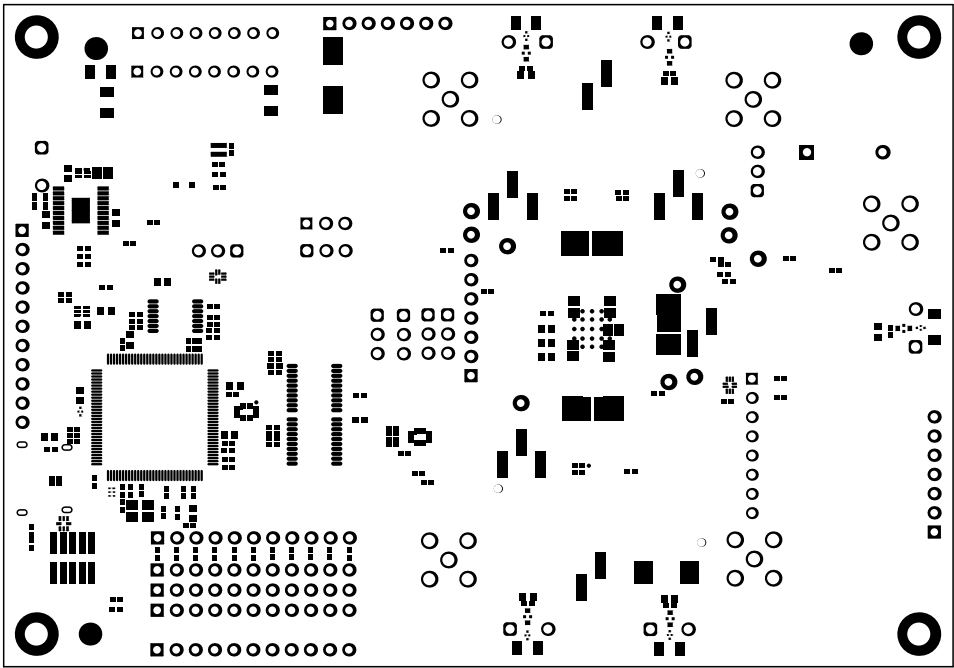
ALL ARTWORK VIEWED FROM TOP SIDE	BOARD #: BMC047	REV: A	SUN REV: Not In VersionControl
LAYER NAME = Signal Layer 2			
PLOT NAME = Signal Layer 3	GENERATED : 3/13/2021 11:20:11 AM	TEXAS INSTRUMENTS	



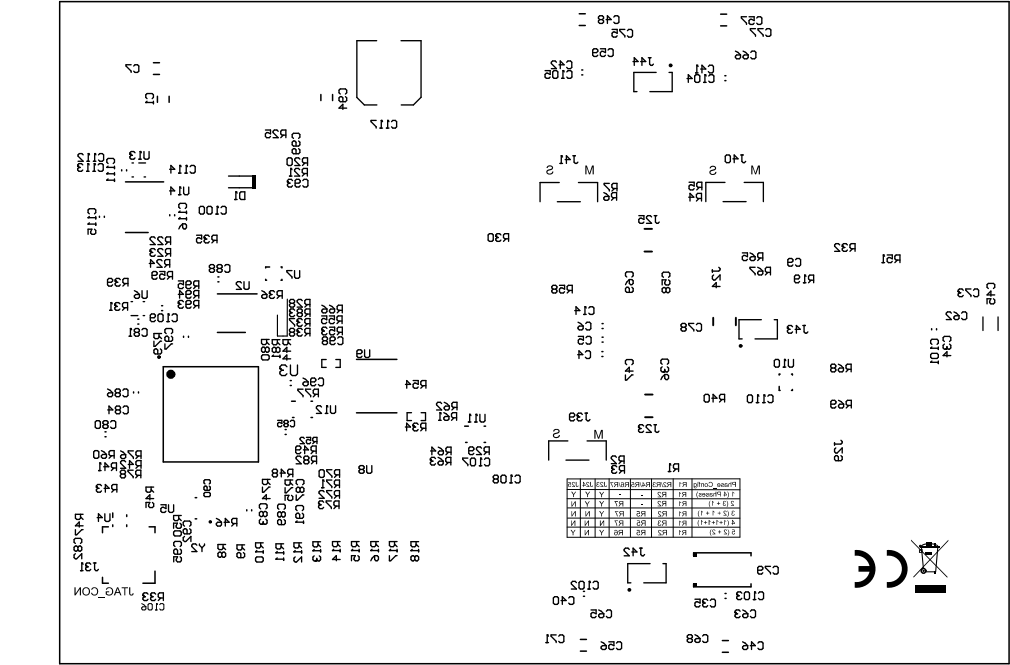
ALL ARTWORK VIEWED FROM TOP SIDE	BOARD #: BMC047	REV: A	SUN REV: Not In VersionControl
LAYER NAME = GND Layer 2			
PLOT NAME = Signal Layer 4	GENERATED : 3/13/2021 11:20:13 AM	TEXAS INSTRUMENTS	



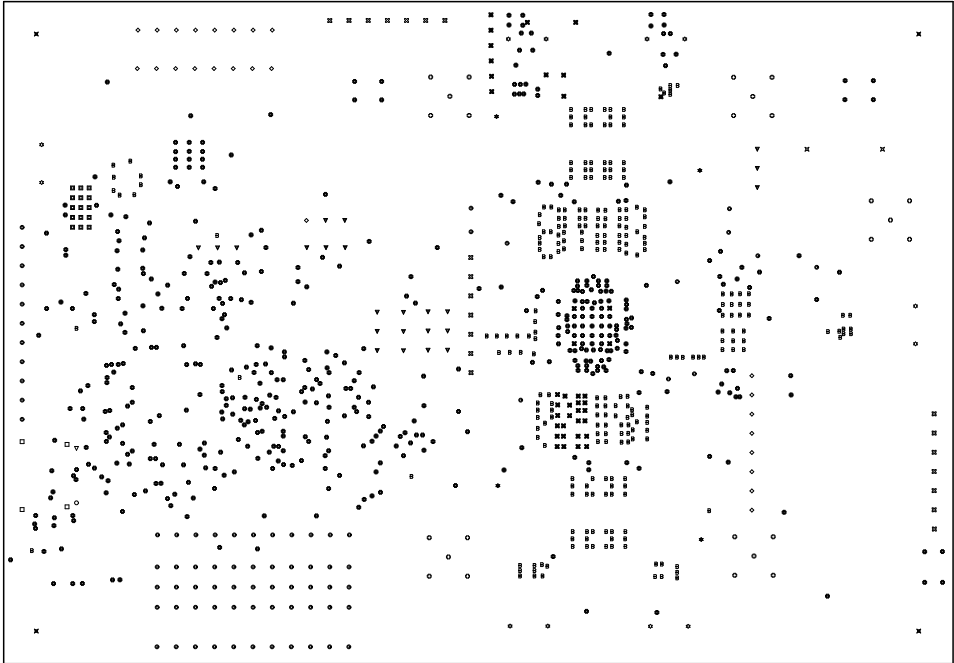
ALL ARTWORK VIEWED FROM TOP SIDE	BOARD #: BMC047	REV: A	SUN REV: Not In VersionControl
LAYER NAME = Bottom Layer			
PLOT NAME = Bottom Layer	GENERATED : 3/13/2021 11:20:16 AM	TEXAS INSTRUMENTS	



ALL ARTWORK VIEWED FROM TOP SIDE	BOARD #:	BMC047	REV:	A	SUN REV:	Not In VersionControl
LAYER NAME = Bottom Solder						
PLOT NAME = Bottom Solder Mask	GENERATED	: 3/13/2021	11:20:19 AM	TEXAS INSTRUMENTS		



ALL ARTWORK VIEWED FROM TOP SIDE	BOARD #: BMC047	REV: A	SUN REV: Not In VersionControl
LAYER NAME = Bottom Overlay			
PLOT NAME = Bottom Overlay	GENERATED : 3/13/2021 11:20:21 AM	TEXAS INSTRUMENTS	



Symbol	Quantity	Finished Hole Size	Plated	Hole Type	Drill Layer Pair	Hole Tolerance
▽	1	25.59mil (0.650mm)	NPTH	Round	Top Layer - Bottom Layer	
✱	4	43.31mil (1.100mm)	NPTH	Round	Top Layer - Bottom Layer	
◻	15	7.87mil (0.200mm)	PTH	Round	Top Layer - Bottom Layer	
⊗	499	8.00mil (0.203mm)	PTH	Round	Top Layer - Bottom Layer	
✱	40	10.00mil (0.254mm)	PTH	Round	Top Layer - Bottom Layer	
B	261	11.00mil (0.279mm)	PTH	Round	Top Layer - Bottom Layer	
⊗	21	39.37mil (1.000mm)	PTH	Round	Top Layer - Bottom Layer	
⊙	77	40.00mil (1.016mm)	PTH	Round	Top Layer - Bottom Layer	
◇	25	40.16mil (1.020mm)	PTH	Round	Top Layer - Bottom Layer	
✱	2	43.31mil (1.100mm)	PTH	Round	Top Layer - Bottom Layer	
▽	23	45.28mil (1.150mm)	PTH	Round	Top Layer - Bottom Layer	
✱	12	47.24mil (1.200mm)	PTH	Round	Top Layer - Bottom Layer	
⊗	25	62.99mil (1.600mm)	PTH	Round	Top Layer - Bottom Layer	
✱	4	120.00mil (3.048mm)	PTH	Round	Top Layer - Bottom Layer	
○	1	25.59mil (0.650mm)	NPTH	Slot	Top Layer - Bottom Layer	
◻	4	19.69mil (0.500mm)	PTH	Slot	Top Layer - Bottom Layer	
1014 Total						
Slot definitions : Routed Path Length = Calculated from tool start centre position to tool end centre position. Hole Length = Routed Path Length + Tool Size = Slot length as defined in the PCB layout						

ALL ARTWORK VIEWED FROM TOP SIDE	BOARD #: BMC047	REV: A	SUN REV: Not In VersionControl
LAYER NAME = Drill Drawing			
PLOT NAME = Drill Drawing	GENERATED : 3/13/2021 11:20:23 AM	TEXAS INSTRUMENTS	



ALL ARTWORK VIEWED FROM TOP SIDE	BOARD #: BMC047	REV: A	SUN REV: Not In VersionControl
LAYER NAME = M2 Board Dimensions			
PLOT NAME = Board Dimensions	GENERATED : 3/13/2021 11:20:31 AM	TEXAS INSTRUMENTS	